

Helicobacter pylori Recombinant Rabbit Monoclonal Antibody Product Datasheet

Catalog# BX50353

Clone# BP6321

Species Cross-reactivity: Helicobacter pylori
Applications: IHC-P

Purity: ProA affinity purified IgG
Form: Liquid

Background:

Helicobacter pylori is a spiral-shaped, microaerophilic, Gram-negative bacterium that colonizes the human gastric mucosa, utilizing polar flagella for motility and adhering to epithelial cells via adhesins (e.g., BabA, SabA). Its primary biological functions center on surviving the acidic gastric environment through urease activity, which hydrolyzes urea into ammonia and bicarbonate to neutralize stomach acid, establishing a niche for chronic persistence.

The detection of Helicobacter pylori in clinical pathology specimens, primarily through histological examination of gastric biopsies (using stains such as Giemsa, Warthin-Starry or immunohistochemistry), provides critical diagnostic information. This is achieved by directly confirming active infection and visually correlating the bacteria's presence with the type and severity of associated mucosal damage, including chronic active gastritis, glandular atrophy, intestinal metaplasia and mucosal lymphoid follicles.

Subcellular location:

Positive overall cytoplasm of Helicobacter pylori
(gastric mucosal epithelium)

Recommended Method:

Heat induced epitope retrieval with Tris-EDTA buffer (pH 9.0), primary antibody incubate at RT (18°C-25°C) for 30 minutes.

Immunogen:

Tissue, cells or virus. This information is proprietary to Biolynx.

Storage Buffer:

PBS 59%, Sodium azide 0.01%, Glycerol 40%, BSA 0.05%.

Storage Conditions:

-25°C to -18°C

Shipment Instructions:

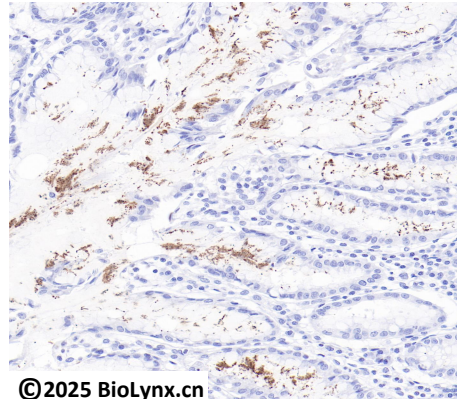
Shipped on blue ice. Upon delivery store at -25°C to -18°C. Avoid freeze / thaw cycles.

Recommended Dilution:

IHC-P: 1:100-1:200

Background References:

1. Pakharukova, MY. et al. (2021) Sci Rep 11:7789.
2. Zhou, D. et al. (2011) PLoS ONE 6(11), e27390.



©2025 Biolynx.cn

Immunohistochemistry (Formalin/PFA-fixed paraffin-embedded sections) analysis of human stomach labelling Helicobacter pylori with BP6321.

Product QC'd by: 

For research use only. Not for use in diagnostic or therapeutic applications.