

HER3 Recombinant Rabbit Monoclonal Antibody Product Datasheet

Catalog# BX50351

Clone# BP6319

Predicted Molecular Wt: 148kDa

Species Cross-reactivity: Human

Applications: IHC-P

Purity: ProA affinity purified IgG

Form: Liquid

Swissprot ID: P21860

Background:

HER3 (Human Epidermal Growth Factor Receptor 3), a member of the EGFR tyrosine kinase receptor family, functions as a critical dimerization partner for other ERBB receptors (notably HER2) despite lacking intrinsic kinase activity.

HER3 is predominantly expressed in kidney and tonsil. In tumor tissue, it is mainly expressed in breast cancer and lung cancer.

HER3 is a critical biomarker and therapeutic target in oncology, with its overexpression and activation detected via immunohistochemistry (IHC), fluorescence in situ hybridization (FISH), or serum assays correlating strongly with aggressive tumor behavior, therapy resistance and poor prognosis. Pathologically, HER3+ tumor cells exhibit increased epithelial-mesenchymal transition (EMT) signatures and stromal invasion.

Subcellular location:

Membrane and cytoplasm

Recommended Method:

Heat induced epitope retrieval with Tris-EDTA buffer (pH 9.0), primary antibody incubate at RT (18°C-25°C) for 30 minutes.

Immunogen:

Synthetic peptide. This information is proprietary to Biolynx.

Storage Buffer:

PBS 59%, Sodium azide 0.01%, Glycerol 40%, BSA 0.05%.

Storage Conditions:

-25°C to -18°C

Shipment Instructions:

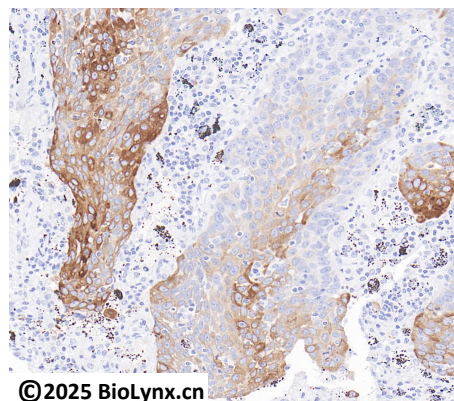
Shipped on blue ice. Upon delivery store at -25°C to -18°C. Avoid freeze / thaw cycles.

Recommended Dilution:

IHC-P: 1:100-1:200

Background References:

- Holbro, T. et al. (2003) Proc Natl Acad Sci U S A 100, 8933-8.
- Kobayashi, M. et al. (2003) Oncogene 22, 1294-301.



Immunohistochemistry (Formalin/PFA-fixed paraffin-embedded sections) analysis of human lung squamous cell carcinoma labelling HER3 with BP6319.

Product QC'd by:



For research use only. Not for use in diagnostic or therapeutic applications.