

Hepatocyte Mouse Monoclonal Antibody Product Datasheet

Catalog# BX50343

Clone# OCH1E5

Predicted Molecular Wt: N/A
Species Cross-reactivity: Human
Applications: IHC-P

Purity: ProA affinity purified IgG
Form: Liquid
Swissprot ID: N/A

Background:

Hepatocytes are the primary functional cells of the liver, constituting the majority of liver cells. Hepatocytes are rich in organelles, possessing robust functions in metabolism, detoxification, synthesis and secretion.

Hepatocyte is mainly expressed in normal liver tissue. In tumor tissue, it is mainly expressed in hepatocellular carcinoma.

In the clinical pathological diagnosis, the characteristics and expression patterns of hepatocytes are great significance in the diagnosis, classification and prognosis evaluation of liver diseases.

Subcellular location:

Cytoplasm

Recommended Method:

Heat induced epitope retrieval with Tris-EDTA buffer (pH 9.0), primary antibody incubate at RT (18°C-25°C) for 30 minutes.

Immunogen:

Synthetic peptide. This information is proprietary to BioLynx.

Storage Buffer:

PBS 59%, Sodium azide 0.01%, Glycerol 40%, BSA 0.05%.

Storage Conditions:

-25°C to -18°C

Shipment Instructions:

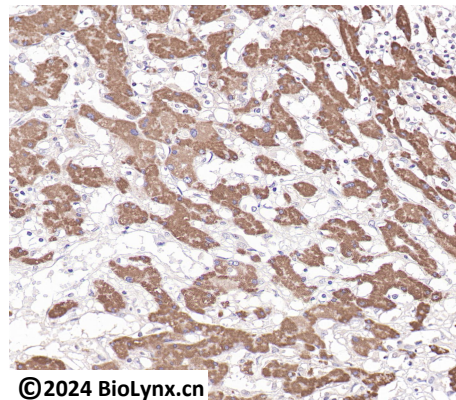
Shipped on blue ice. Upon delivery store at -25°C to -18°C. Avoid freeze / thaw cycles.

Recommended Dilution:

IHC-P: 1:100-1:200

Background References:

- Song G et al. (2022) Nat Commun 13:1642.
- Bertol BC et al. (2020) Clin Immunol 217:108482.



©2024 BioLynx.cn

Immunohistochemistry (Formalin/PFA-fixed paraffin-embedded sections) analysis of hepatocellular carcinoma labelling Hepatocyte with OCH1E5.

Product QC'd by:



For research use only. Not for use in diagnostic or therapeutic applications.