

Estrogen receptor beta Recombinant Rabbit Monoclonal Antibody Product Datasheet

Catalog# BX50320

Clone# BP6297

Predicted Molecular Wt: 59kDa
Species Cross-reactivity: Human
Applications: IHC-P

Purity: ProA affinity purified IgG
Form: Liquid
Swissprot ID: Q92731

Background:

Estrogen receptors (ER) are members of the steroid/thyroid hormone receptor superfamily of ligand-activated transcription factors. Estrogen receptors, including ER-alpha and ER-beta, contain DNA binding and ligand binding domains and are critically involved in regulating the normal function of reproductive tissues.

ER-beta is expressed in tissues of the female reproductive system, such as ovaries and mammary glands.

The role of ER-beta in various cancer types is controversial, but it is generally thought to be a tumor suppressor. Absence of ER-beta has been shown to be a marker of poor prognosis in breast cancer.

Subcellular location:

Nucleus/Cytoplasmic

Recommended Method:

Heat induced epitope retrieval with Tris-EDTA buffer (pH 9.0), primary antibody incubate at RT (18°C-25°C) for 30 minutes.

Immunogen:

Synthetic peptide. This information is proprietary to Biolynx.

Storage Buffer:

PBS 59%, Sodium azide 0.01%, Glycerol 40%, BSA 0.05%.

Storage Conditions:

-25°C to -18°C

Shipment Instructions:

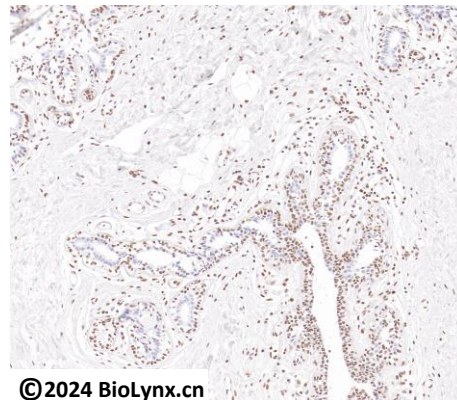
Shipped on blue ice. Upon delivery store at -25°C to -18°C. Avoid freeze / thaw cycles.

Recommended Dilution:

IHC-P: 1:100-1:200


Background References:

1. Kumar, R. (2011) J Amino Acids 2011, 812540.
2. McPherson, S.J. (2010) Proc Natl Acad Sci USA 107, 3123-8.



©2024 Biolynx.cn

Immunohistochemistry (Formalin/PFA-fixed paraffin-embedded sections) analysis of breast labelling estrogen receptor beta with BP6297.

Product QC'd by: 

For research use only. Not for use in diagnostic or therapeutic applications.