

## CDX2

### Recombinant Rabbit Monoclonal Antibody

### Product Datasheet

Catalog# BX00038

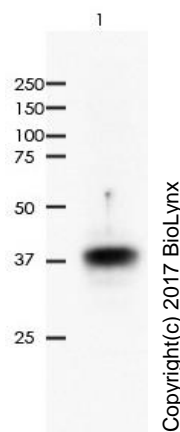
Clone# RR642

**Predicted Molecular Wt:** 34kDa  
**Species Cross-reactivity:** Human  
*Species cross-reactivity determined by WB*  
**Applications:** WB IHC-P

**Purity:** ProA affinity purified IgG  
**Form:** Liquid  
**Swissprot ID:** Q99626

#### Background:

Involved in the transcriptional regulation of multiple genes expressed in the intestinal epithelium. Important in broad range of functions from early differentiation to maintenance of the intestinal epithelial lining of both the small and large intestine.



All lane: Anti-CD2X antibody at 1:1,000 dilution  
Predicted MW: 34 kDa  
Observed MW: 40 kDa

Lane 1: HEK293

Lysate at 10 µg per lane  
2nd Ab:  
G&R HRP(H+L) 1:10,000

Exposure: 120s

#### Immunogen:

A synthetic peptide corresponding to residues on the N-terminus of human CDX2 was used as an immunogen.

#### Storage Buffer:

PBS 59%, Sodium azide 0.01%, Glycerol 40%, BSA 0.05%.

#### Storage conditions:

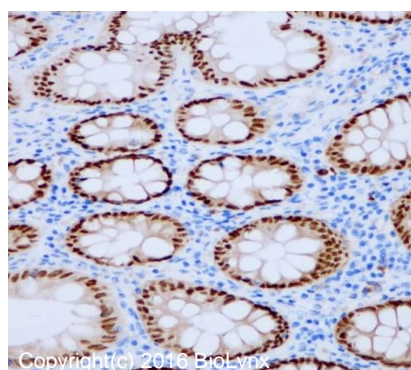
-20°C.

#### Storage instructions:

Shipped on blue ice. Upon delivery, aliquot, and store at -20°C. Avoid freeze / thaw cycles.

#### Recommended Dilutions:

WB: 1:1,000 - 1:2,000  
IHC-P: 1:100 - 1:200



Immunohistochemistry (Formalin/PFA-fixed paraffin-embedded sections) analysis of human colon tissue labelling CDX2 with RR642 at 1:200. Heat mediated antigen retrieval was performed using Tris/EDTA buffer pH 9.0.

#### Background References:

1. Xin S, et.al, Oncology. 2007;73(5-6):357-65.
2. Werling RW, et.al, Am J Surg Pathol. 2003 Mar;27(3):303-10.

Product QC'd by:



For research use only. Not for use in diagnostic or therapeutic applications.